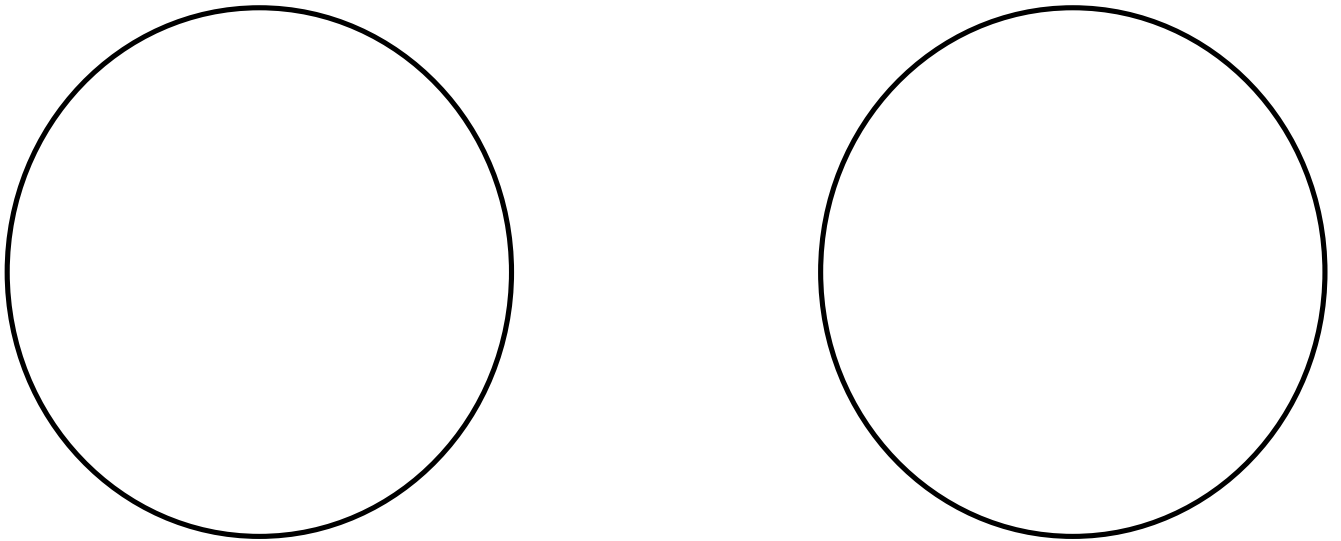


# Two islands

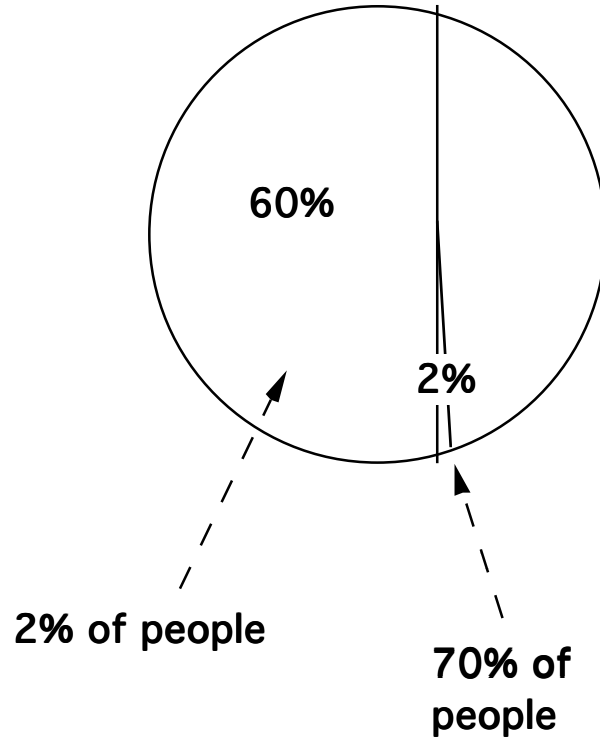
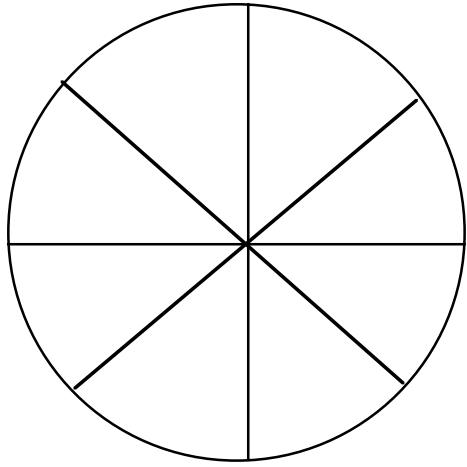


same land area & quality  
same initial population & growth rate  
(3% per year)  
same technical capacity

island of 10,000 (hectares)  
initial number of families = 100  
population growth 3% per year  
(=> population doubles every generation  
& land area per family halves)

gener- ation	area/ family
0	100
1	50
2	25
3	12.5
4	6.2
5	3.1
6	1.6
7	.8
8	
9	
10	

# Two islands



island of 10,000 (hectares)  
 initial number of families = 100  
 population growth 3% per year  
 (=> population doubles every generation  
 & land area per family halves)

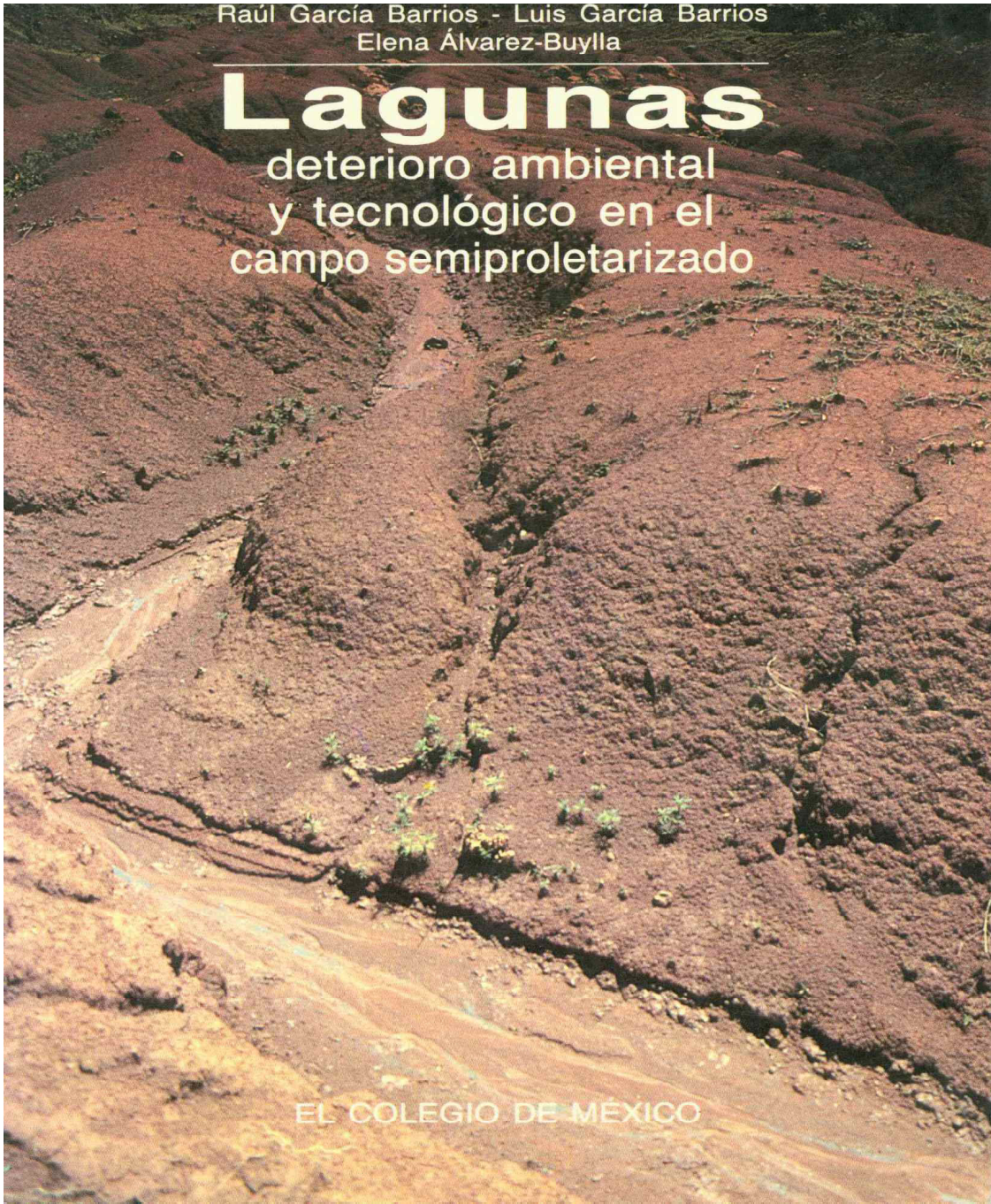
gener- ation	area/ family	Rich 2%	Middle 28%	Poor 70%
0	100	3000	136	2.9
1	50	1500	68	1.4
2	25	750	34	.7
3	12.5	375	17	
4	6.2	188	8.5	
5	3.1	94	4.2	
6	1.6	47	2.1	
7	.8	23.4	1.1	
8		11.7		
9				
10				

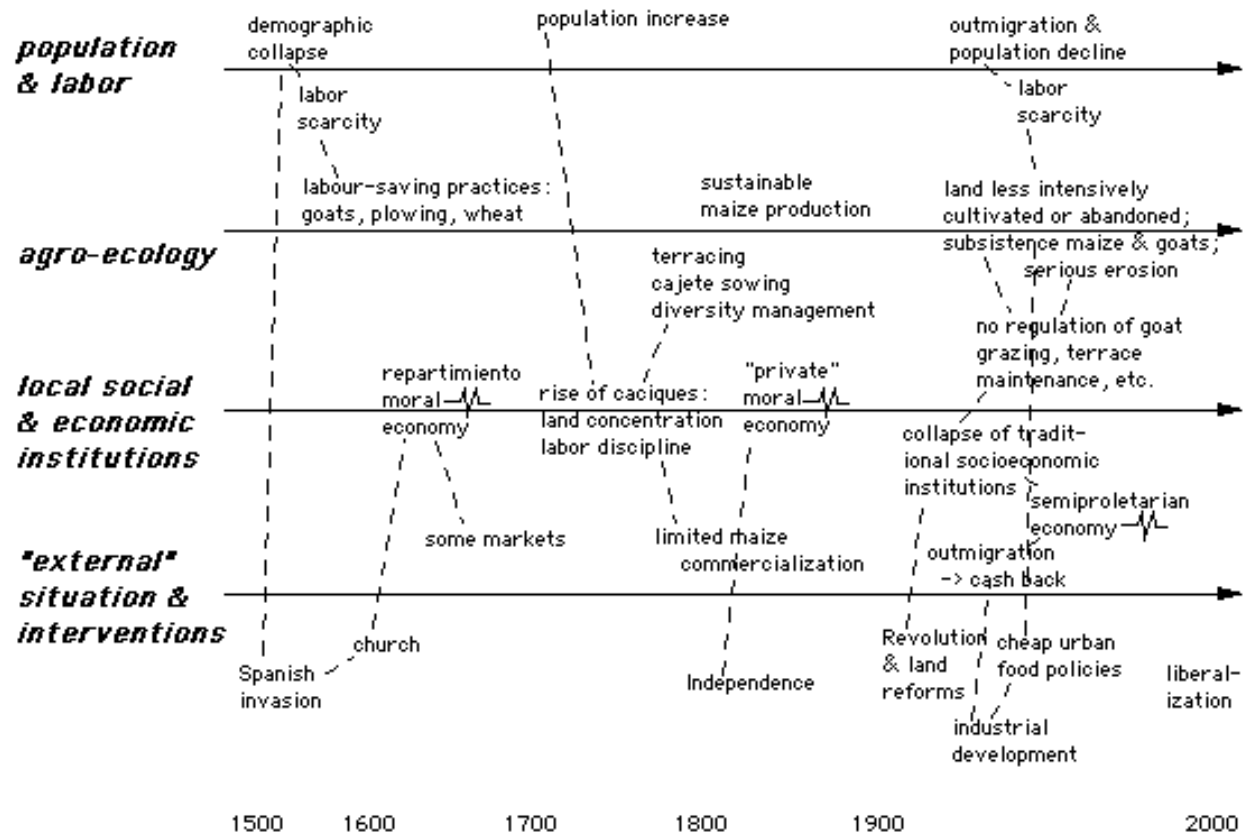
Raúl García Barrios - Luis García Barrios  
Elena Álvarez-Buylla

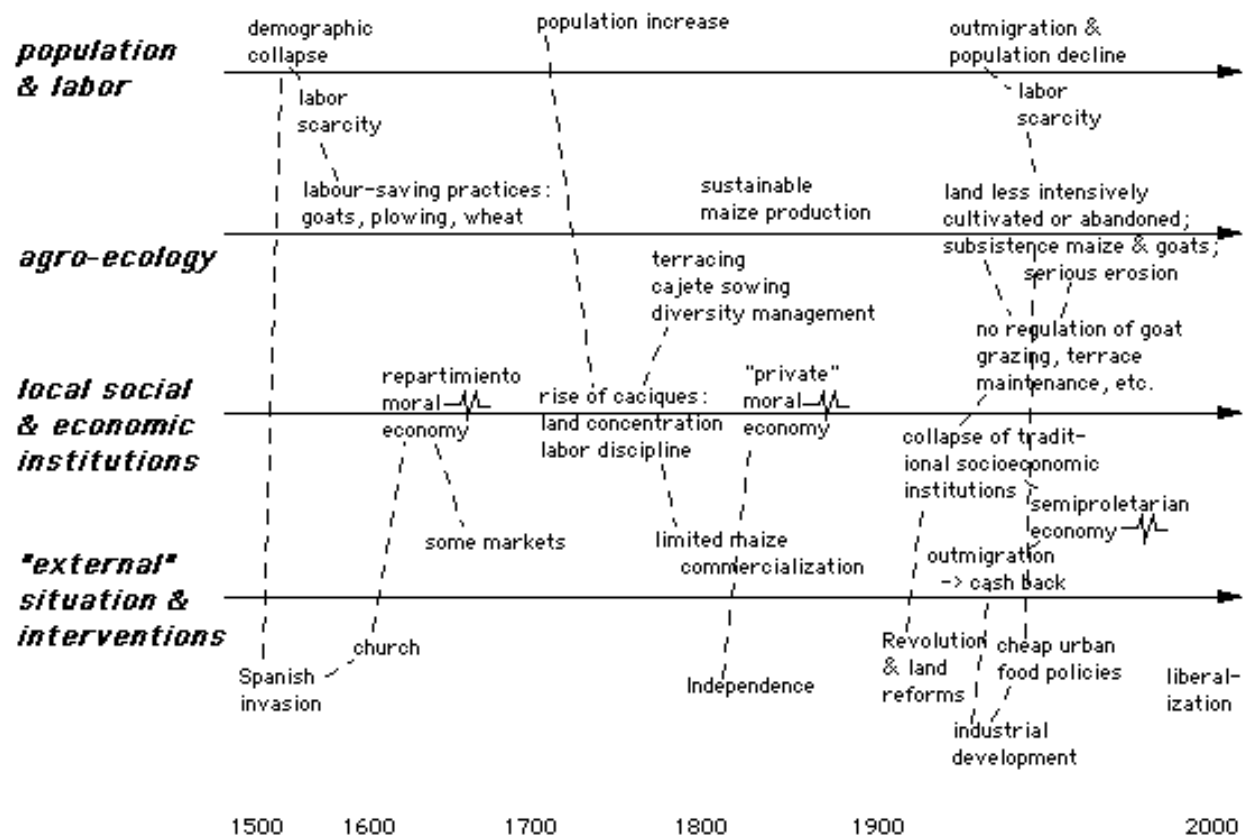
# Lagunas

deterioro ambiental  
y tecnológico en el  
campo semiproletarizado

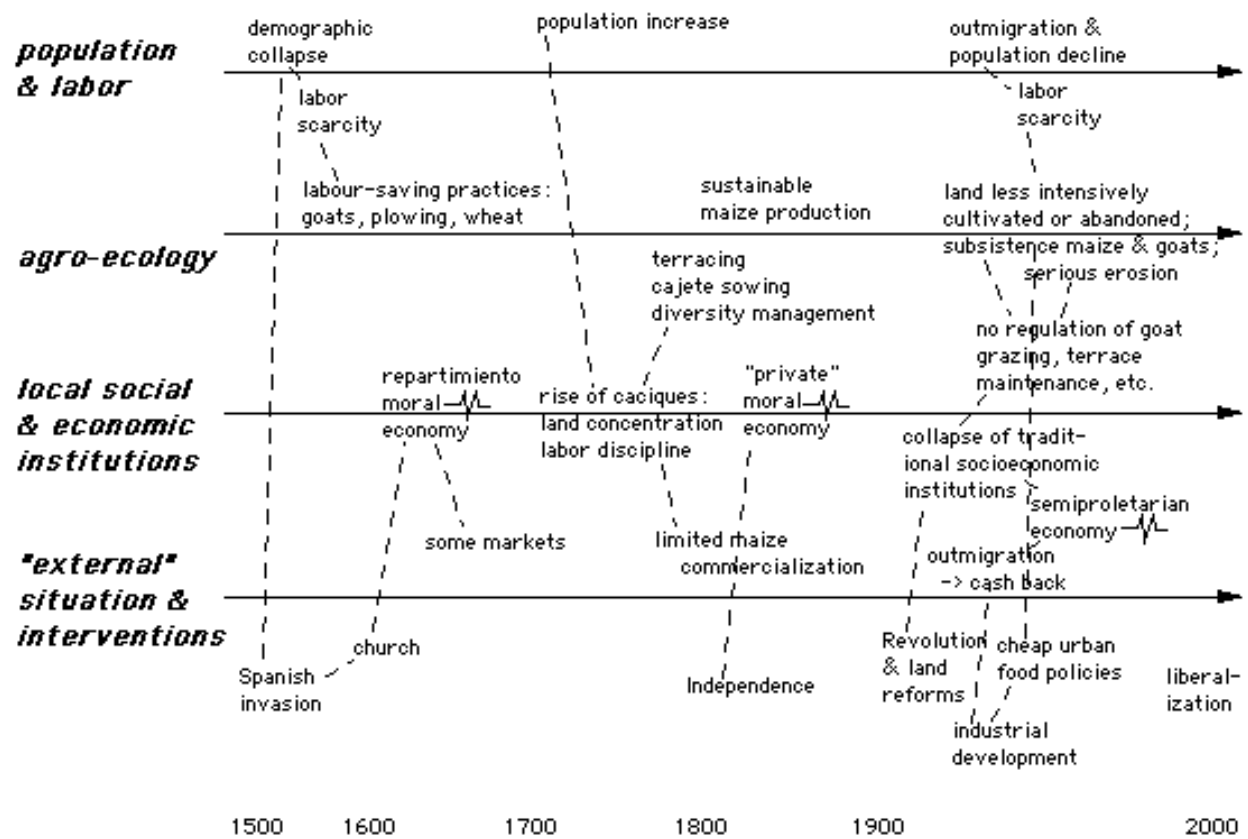
EL COLEGIO DE MÉXICO





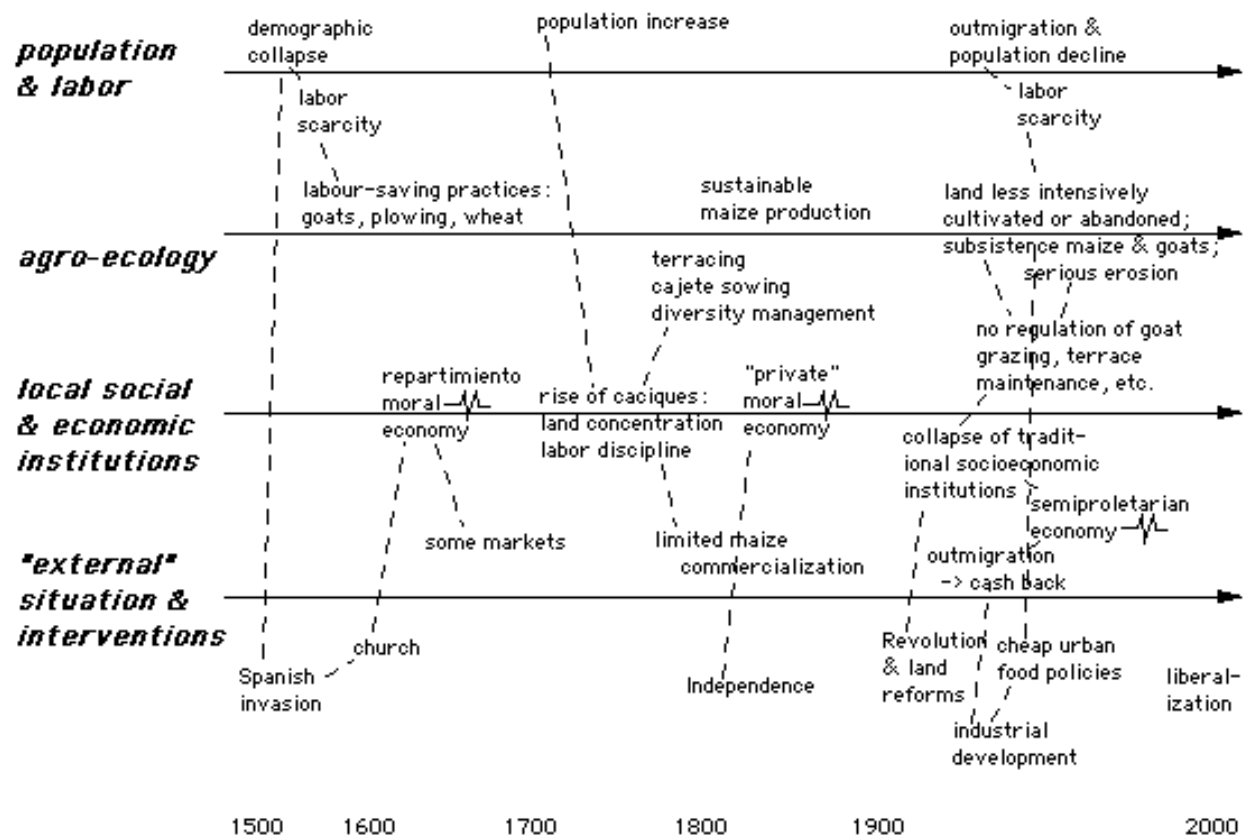


## heterogeneous components

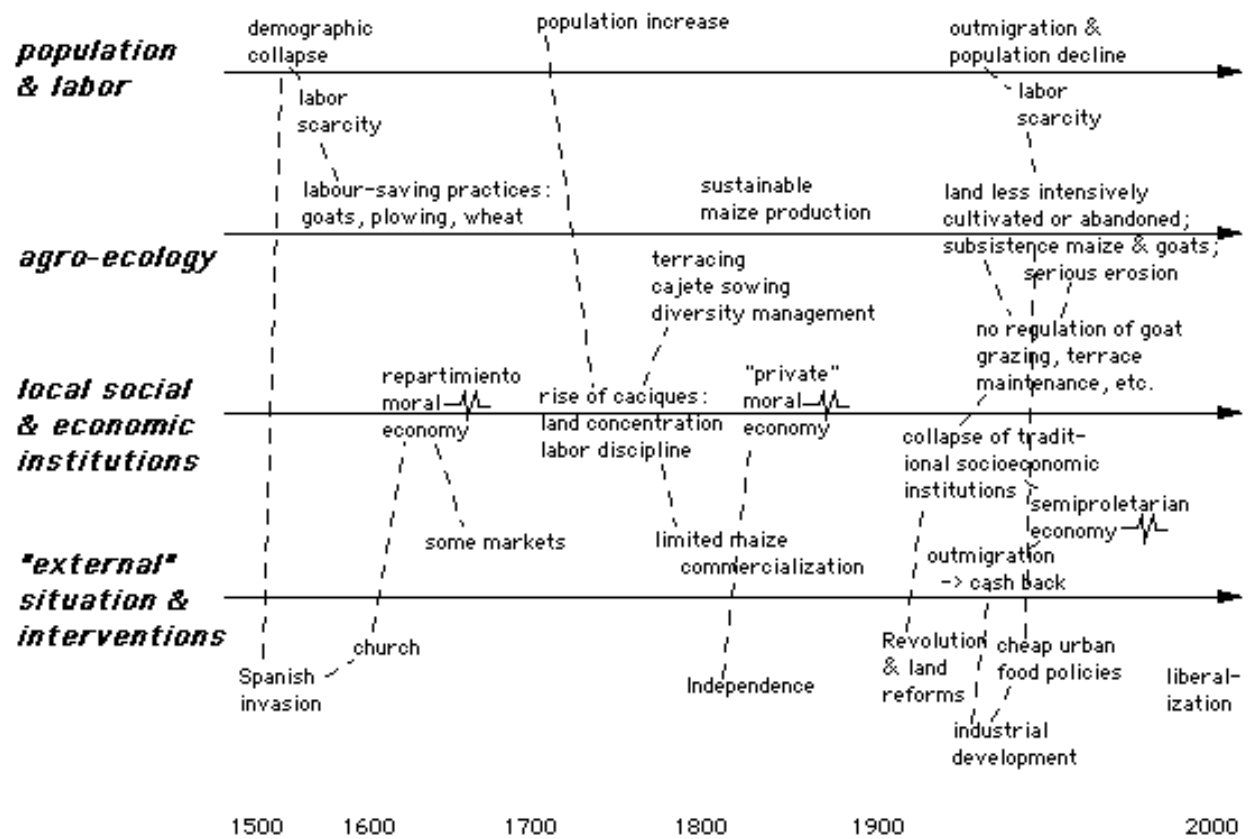


**built up over time**

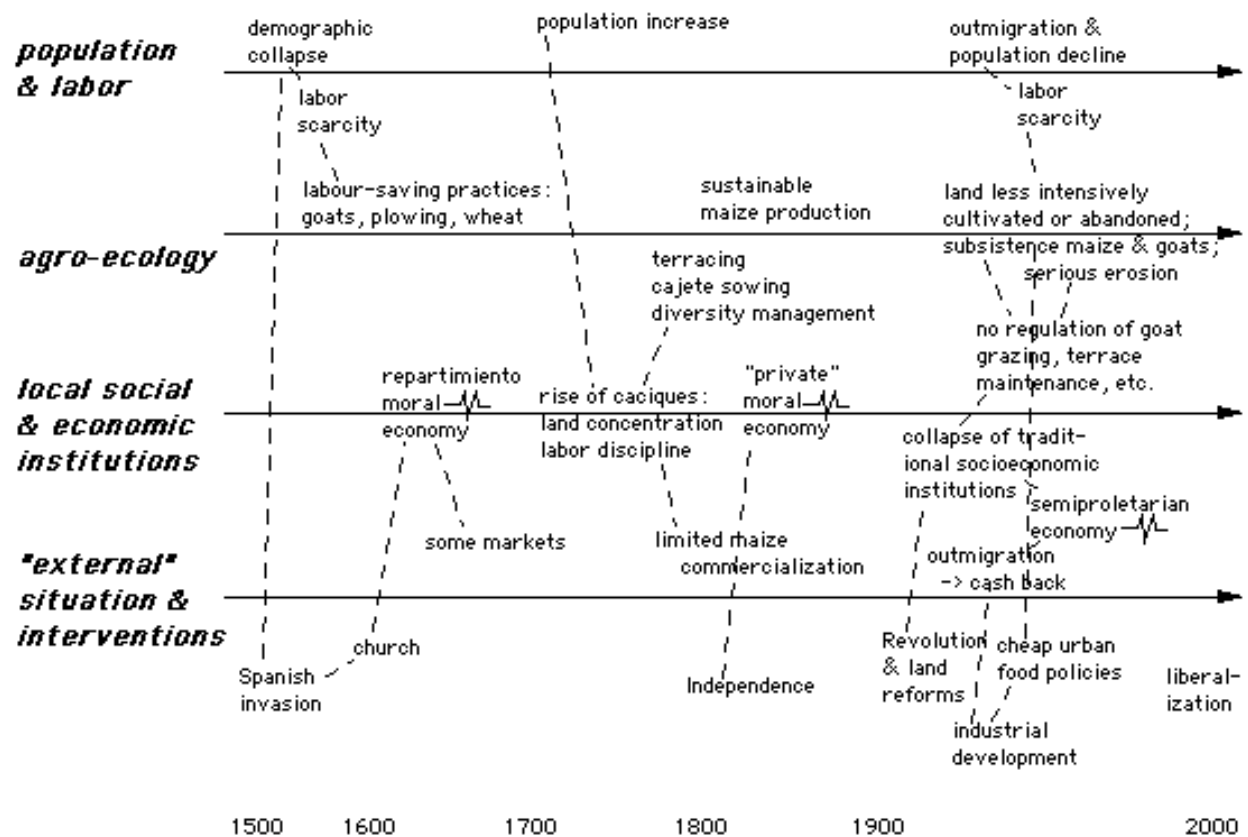




**subject to ongoing restructuring**



**embedded in wider dynamics**



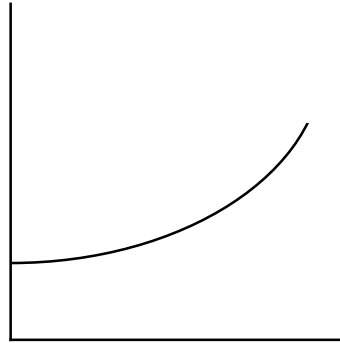
**lack definite boundaries**

**what goes on "outside" continually restructures**

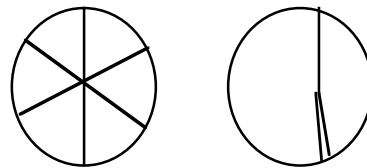
**what is "inside"**

**diverse processes come together**

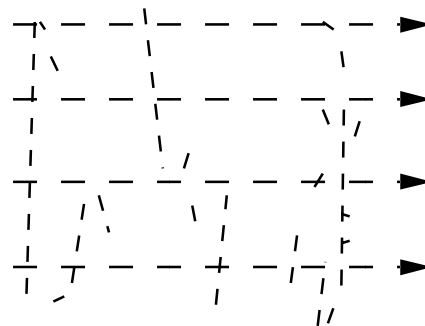
**1.**  
simple well-  
bounded system



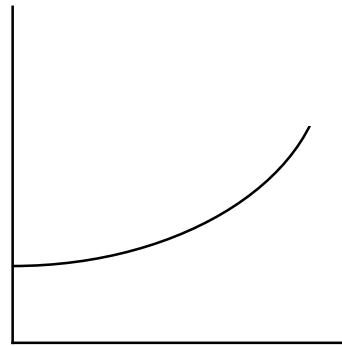
**2.**  
simple themes,  
opening things up



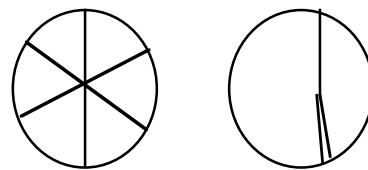
**3.**  
differentiated,  
locally particular  
accounts



1.  
simple well-  
bounded system



2.  
simple themes,  
opening things up



3.  
differentiated,  
locally particular  
accounts

